



Cokima Technology (Shenzhen) Co., Ltd.

Address: Lechuanghui Mansion, No. 1211, Guangguang Road, Longhua District,
Shenzhen, Guangdong Province, China

Web: www.cokima.com

Email: vivian@cokima.com

Tel: +86 135 3726 2728 /+86 137 1458 7681



EXPLORER LUGGAGE SERIES

Pan top bag
Tail Bags
Tank Bag

Motorcycle
Smart
Riding System

RRV
Radar rear-view
WARNING

MAKE
FREEDOM
SAFER

Outdoor Camping
Vacuum Flask
Portable Chair

MOTORCYCLE

RIDING



**MAKE
FREEDOM
SAFER**

CONTENTS

01

ABOUT COKIMA

02

MOTORCYCLE
SMART RIDING SYSTEM

03

EXPLORER
LUGGAGE SERIES

04

OUTDOOR
CAMPING SERIES

05

RIDING
NEIGHBORHOOD SERIES

06

ELECTRIC
AIR PUMP SERIES



Forged by the Ride The Story of Cokima.

Adventure riding isn't just a hobby—it's a way of life. It's the thrill of pushing past the horizon, the solitude of a desert sunrise, and the camaraderie of fellow travelers met along the way. It's also the aching muscles, the unpredictable weather, and the endless search for gear that won't let you down when it matters most.

That's where Cokima was born.

For years, our founder, an avid ADV rider, roamed the world on two wheels. From the high-altitude passes of the Andes to the unrelenting heat of the Australian Outback, he learned firsthand what adventure riding demands. Each mile taught a lesson: comfort isn't a luxury—it's survival. Safety isn't optional—it's freedom.

Frustrated by gear that fell short in real-world conditions, he set out to create something better. Not just equipment, but a system—smartly designed, ruggedly built, and relentlessly tested in the toughest conditions. Every product we make is inspired by real miles, real challenges, and real solutions that ADV riders need on the road.

At Cokima, we believe that adventure should never be limited by discomfort or doubt. Our gear is built to keep you riding longer, safer, and in total confidence, so you can focus on what matters—the journey ahead.

Because when you're thousands of miles from home, your gear isn't just equipment. It's your lifeline.

Ride further. Ride smarter. Ride with Cokima.

What products do we offer?

At Cokima, we embrace the brand philosophy of "MAKE FREEDOM SAFER," specializing in the R&D and manufacturing of motorcycle-related riding equipment, including intelligent motorcycle riding systems, gear bags, and outdoor essentials.

Driven by our mission to enhance motorcycle riding safety, we continuously innovate to deliver products that make every ride safer and more convenient.

Beyond offering high-quality gear, we are committed to providing end-to-end services and dedicated care for every rider.

Our team is passionate about refining products and experiences to ensure that motorcyclists enjoy the true freedom of the open road—with safety as their steadfast companion.

At Cokima, we believe every ride should be an exhilarating journey, protected by cutting-edge technology and unwavering reliability.



Smart Riding System



Luggage



Outdoor Camping

CK3-MAX

BMW-specific Smart Riding System

Built exclusively for BMW motorcycles, the CK3-MAX is a truly plug-and-play smart riding system that snaps into your OEM mount in seconds—no tools, no mods, no hassle. Instant wireless CarPlay and Android Auto bring turn-by-turn navigation, music, and calls right to your cockpit, while full-screen mirroring keeps your favorite apps in view. A smart rearview mirror with radar-based alerts and front/rear HD dashcams record every moment, and a WonderWheel control lets you scroll menus without taking your eyes off the road. Its glove-friendly IP67 touchscreen displays real-time engine data, tire pressure, RPM, fuel consumption, and speed, and built-in anti-theft protection guards your ride when you're off the bike. Deep app integration means live camera feeds, route replays, and location sharing are always at your fingertips—for smarter, safer adventures on every journey.



Original vehicle data display



Original vehicle scroll control



Radar Rear-View Warning



Screen Mirroring



Driving Recorder



Voice Interaction



Map Navigation



Tire Pressure



App Control

CK3-MAX For BMW Motorrad

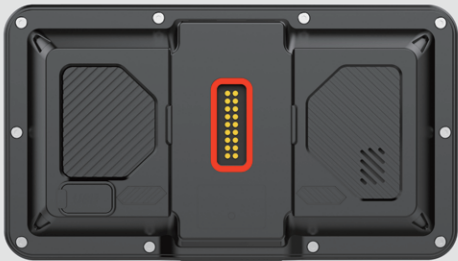


CK3-MAX Universal Quick-Release Base



*The prerequisite for using the front camera is purchasing the universal base; without it, wiring cannot be completed and the function will not be usable.

Quick-Release Base



Direct OEM-fit installation

Designed exclusively for BMW motorcycles, this intelligent head unit features an OEM-compatible base and a non-destructive, tool-free quick-release mechanism. You'll enjoy a seamless smart-riding experience while perfectly preserving your motorcycle's original factory finish.

Universal Quick-Release Base

For motorcycles without a factory bracket, the Cokima Universal Quick-Release Base offers the same effortless install and removal. Precision-engineered for rock-solid stability, it keeps your head unit secure—no rattling or loosening—ride after ride. An optional built-in GPS module delivers real-time speed, distance, altitude, and more.



Crossbar

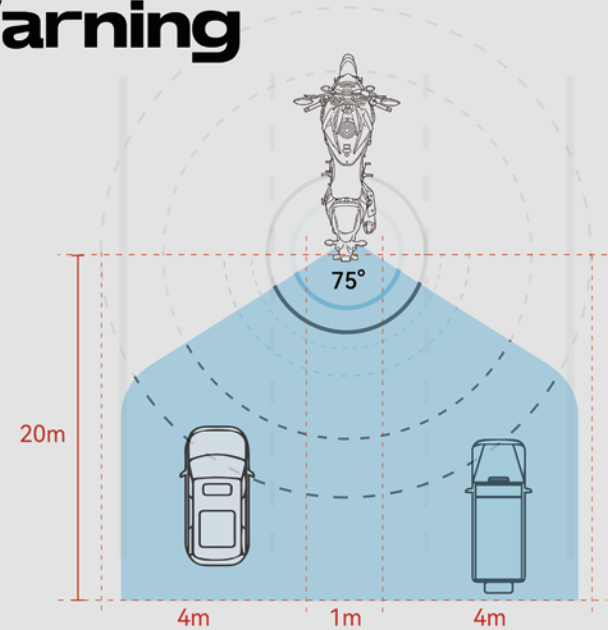


Ball Head

MOTORCYCLE SMART RIDING SYSTEM

Radar Rear-View Warning

Millimeter-wave radar dramatically boosts riding safety by delivering pinpoint rear-view alerts. Emitting and receiving high-frequency signals, it calculates the distance to approaching vehicles from signal travel time and continually scans the rider's blind spots. When a vehicle enters a blind spot, the system automatically switches into Rear-Radar Warning Vision (RRV) mode, triggering coordinated alerts:



Visual Alert
Flashing Light Alert

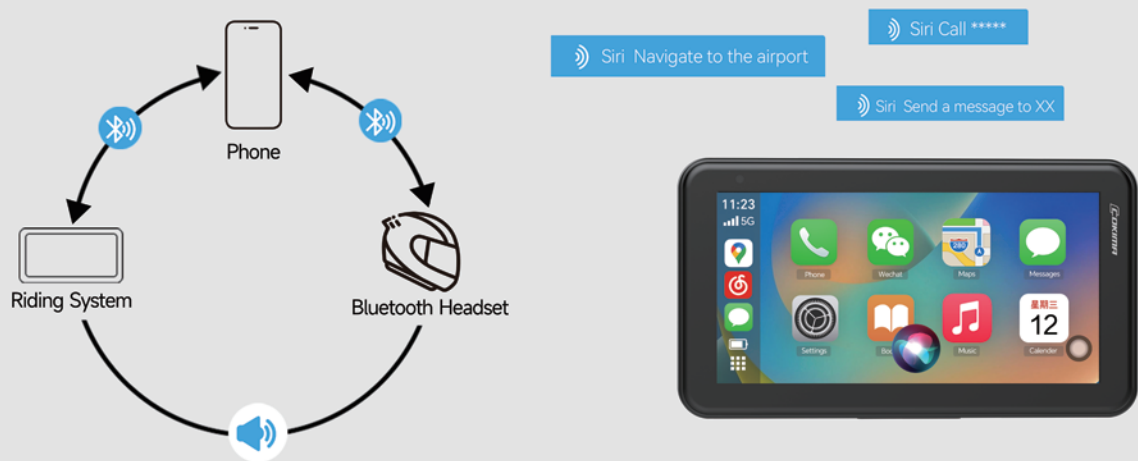
Audible Warning
Buzzer Sound

Real-Time Video Feed
Auto Rearview Video

By combining these alert mechanisms, the radar-based warning system effectively eliminates blind spots and significantly enhances riding safety—even in busy traffic or at night.

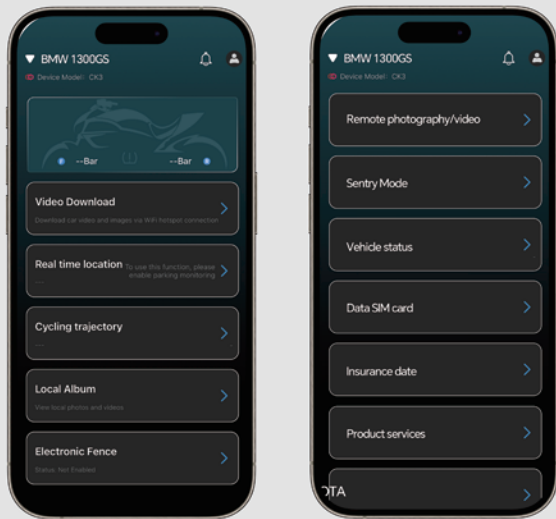
Three-Device Voice-Control Integration

Interconnect three devices for seamless voice operation: pair your headphones with your phone while wirelessly mirroring its screen to your motorcycle's display. With full multi-app support, you can effortlessly handle phone calls, WeChat voice messages, music playback, and navigation audio—all via intuitive voice commands.



Mobile APP Operations

Easily share real-time locations across multiple riders with the group ride navigation feature. The group leader can create a ride group, set a shared destination, or plan multi-stop routes, while members can instantly sync navigation with one click. Built-in voice intercom makes communication seamless, and tapping a rider's icon allows for quick positioning or direct calling. Perfect for motorcycle touring groups, it greatly enhances team coordination and riding efficiency.



Self-developed Cokima CK-Link screen mirroring



The self-developed Cokima CK-Link screen mirroring technology breaks down brand barriers, enabling more mobile phones to easily achieve screen mirroring. It is also equipped with multiple functions such as real-time team intercom, member positioning, call/message reminders, and music playback, providing a one-stop solution to meet interactive needs during travel.

Team Real-Time Intercom & Positioning

With the team-up function, you can invite fellow friends to join your group. It allows you to initiate real-time intercoms to communicate road conditions and clearly track the real-time locations of all team members, ensuring efficient and smooth information synchronization during the trip. Breaking down headphone brand barriers, real-time intercom is achievable even with different brand headphones.



CK3-Plus

Quick-Release Model

Radar Escort for Safe Riding: Cokima CK3-Plus Motorcycle Smart Riding System

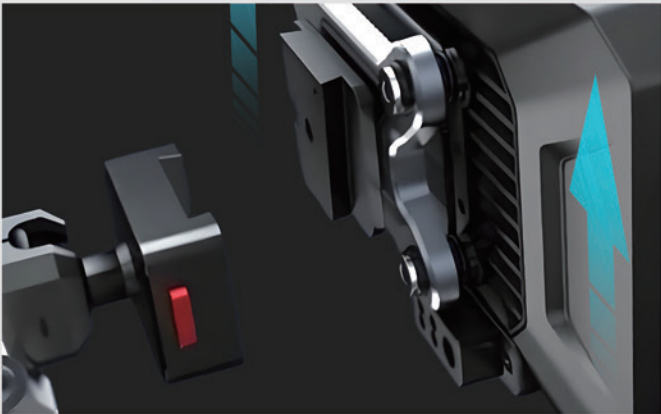
Equipped with a radar rear-view warning function to eliminate rear blind spots, the Cokima CK3-Plus Motorcycle Smart Riding System ensures safer rides. It also features front and rear 1080P dual cameras with high-quality imaging capabilities, allowing you to record riding road conditions videos at any time. Smart functions such as wireless phone mirroring, tire pressure monitoring, and mobile APP control make your journey more secure and convenient.

The system comes with a 5.5-inch high-brightness display and GPS high-precision satellite positioning for an intelligent and hassle-free riding experience. The main unit is IP67 dustproof and waterproof, easily withstanding harsh outdoor environments.



Product Specifications

Display:	5.5-inch HD screen (960X480)	G-sensor:	Supported
Front Lens:	AHD1080p 25fps	Wired control buttons:	Supported
Rear Lens:	AHD1080p 25fps	WiFi:	2.4G/5G
Video File Format:	MP4	Apple CarPlay:	Supported
Image File Format:	JPG	Android Auto:	Supported
Video/Image Coding and Decoding:	H.264/H.265	HUAWEI HiCar:	Supported
Loop Recording:	Seamless loop recording without frame loss	WIFI video:	Supported
Simultaneous Dual Recording of Front and Rear Lenses:	Supported	Motorcycle navigation:	Supported
Built-in Microphone:	High-fidelity microphone	Millimeter-wave radar:	Optional
Built-in Speaker:	4Ω 1.25W	Tire pressure:	Supported
One-key Mute:	Supported	Storage temperature:	-30℃ to +80℃
Memory Card:	TF card 16-128GB (Class 10+ genuine card)	Operating humidity:	15-65%RH
Time Watermark:	Supported	Operating temperature:	-20℃ to +70℃
Language:	Multi-language switching supported	System rated voltage:	5VDC (±0.3)
Parking Monitoring:	Supported	System static current:	≤1mA
One-key Lock Function:	Supported	System operating current:	≤1800mA



Quick-Release Design



Handlebar Wire Controller Operation

CK3-QC

Motorcycle Smart Riding System

The CK3-QC is a lightweight motorcycle riding system, equipped with CarPlay, Android Auto, CK-Link, CarLife+, and Hicar screen mirroring for seamless smartphone integration. It features advanced functions including tire pressure monitoring, rain-day screen lock, automatic brightness adjustment, and multi-language support. Built with a slim, durable design, the camera lens is waterproof, dustproof, and resistant to high temperatures. Flexible, non-destructive installation with multiple accessory options makes it easy to adapt to various motorcycle models—delivering smarter, safer rides without compromise.



Screen Mirroring



Tire Pressure



Voice Interaction



Map Navigation



Rain Mode Screen Lock



Tire Pressure Alert

Product Parameters

Dimensions:	138mm×79mm×20mm	Processor:	V851S
Screen Specifications:	5-inch 480×854 IPS screen	RAM (Random Access Memory):	64M
Screen Brightness:	Max 1000 NIT brightness	Sensor:	Light sensor
Rated Input Voltage:	Rated input voltage: 12V	Bluetooth:	BT4.2
Waterproof Rating:	Waterproof rating: IP67	Tire Pressure Module:	433MHZ
Operating Temperature:	Operating temperature: -10°C to 60°C	Wireless Screen Mirroring:	CarPlay, Hicar, Android Auto, Carlife
Language:	Multi-language selection supported	Rain Mode Screen Lock:	Supported

Three Types of Mounting Brackets



Quick-Release Design



Oil Tank Bracket



Rearview Mirror Mount

5

MODELS

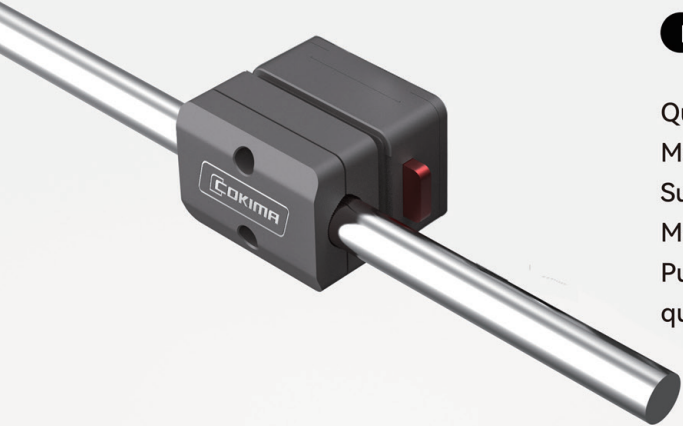
-CHOOSE THE SUITABLE ONE



MODELS	CK3-MAX(BMW)	CK3-MAX(UNIVERSAL)	CK3-PLUS	CK3-QC
Product Overview	The BMW - exclusive car infotainment system can be installed on the original car base without damage. It can read the original car data and display it in real time. Paired with functions such as radar rear - view, it makes your vehicle more intelligent.	BMW-exclusive Riding System + universal quick-release base, easily achieving quick installation and removal, original vehicle data reading, and functions like radar rear-view, making your vehicle smarter.	High-performance quick-release module design enables fast removal and installation of the main unit. Paired with radar rear-view warning function, it supports 1080P video recording, map navigation, music playback, tire pressure monitoring, GPS and other functions.	It can meet the needs of map navigation, tire pressure monitoring, and music listening during daily cycling, with simple operation and convenient installation.
WiFi	2.4G~5G	2.4G~5G	2.4G~5G	2.4G~5G
Installation Bracket	BMW original car base	Cross - bar / Ball - head Quick - release Base	Cross-bar /Rear-view Mirror Bracket	Cross-bar /Rear-view Mirror Bracket Oil Tank Bracket
Screen	5.5-inch 1440*720	5.5-inch 1440*720	5.5-inch 960*480	5-inch 854*480
Screen Brightness	> 1000NIT	> 1000NIT	> 1000NIT	> 1000NIT
Quick Release	☑	☑	☑	☒
Screen Mirroring	Carplay、Android auto、CK-Link、Hicar	Carplay、Android auto、CK-Link、Hicar	Carplay、Android auto、CK-Link、Hicar	Carplay、Android auto、CK-Link、Hicar、Carlife
Dash Cam	rear 1080P, wide - angle, intelligent anti - shake.	front and rear 1080P, wide - angle, intelligent anti - shake.	front and rear 1080P, wide - angle, intelligent anti - shake.	☒
Millimeter - wave Radar	☑	☑	☑	☒
Tire Pressure	☑	☑	☑	☑
Controller	OEM Wheel Control Menu	OEM Wheel Control Menu	☑	☒
Original Vehicle Data Reading	☑	☑	☒	☒
GPS	☒	☑	☑	☒
Mobile App	☑	☑	☑	☒
Team intercom & positioning	☑	☑	☑	☑
Driving Video Download	☑	☑	☑	☒
Riding Track	☑	☑	☒	☒
Real-time Positioning	☑	☑	☒	☒
Geofencing	☑	☑	☒	☒
Sentinel Mode	☑	☑	☒	☒
Riding Data Statistics	☑	☑	☒	☒
Waterproof Rating	IP67	IP67	IP67	IP67
OTA	☑	☑	☑	☒

CK3 Series Fixed Bracket (Optional)

To meet the flexible installation needs of motorcycle smart riding systems, we have launched exclusive mounting brackets that support multiple models and scenarios. Crafted from high-strength, durable aluminum profiles, these brackets offer both stability and anti-vibration performance, securely holding system devices in place and preventing displacement or damage caused by vibrations during riding.



For CK3-QC

Quick-Release Crossbar Module
Model: CK3-Z05 + CK3-Z06
Suitable Pipe Diameter: 12mm
Material: 6063 Precision Aluminum Profile
Purpose: Fix the vehicle device on the motorcycle crossbar to achieve quick release and installation

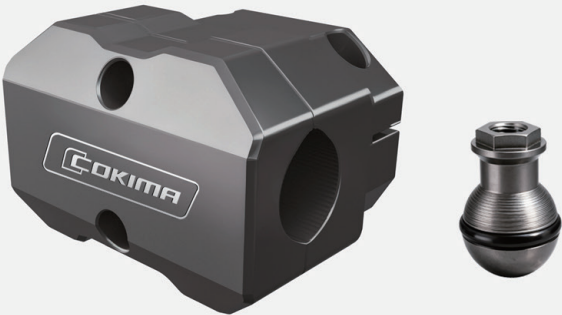
For CK3 Series

Crossbar Pipe Clamp Bracket
Model: CK3-Z01
Reducer Ring: 22/25/28mm
Material: 6063 Precision Aluminum Profile
Purpose: Fix the car machine on the motorcycle crossbar



For CK3 Series

Crossbar Pipe Clamp Bracket
Model: CK3-Z04
Suitable Pipe Diameter: Suitable for 12mm diameter crossbar
Material: 6063 Precision Aluminum Profile
Purpose: Fix the vehicle device on the motorcycle crossbar



For CK3 Series

Triple Tree Bracket
Model: CK3-Z03
Expansion Plugs: 12/15/18/21/24/27mm
Material: 6063 Precision Aluminum Profile
Purpose: Fix the vehicle device in the hole of the motorcycle's triple tree



For CK3 Series

Product Name: Crossbar Strip Pipe Clamp Bracket
Model: CK3-Z02
Reducer Ring: 22/25/28mm
Material: 6063 Precision Aluminum Profile
Purpose: Fix the vehicle device on the motorcycle crossbar



Explorer Luggage Series



CK6-EPO1

Explorer - Sidebox Expansion Waterproof Bag



16L



Waterproof & Abrasion-Resistant TPU



Quick-release hook



Waterproof Zipper



Dividing Panel



High-Visibility Reflective





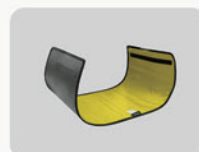
CK6-EPO2 II

Explorer - Multifunctional Motorcycle Travel Bag

48L



充气防水袋 (选配)



U形支撑板 (选配)



Waterproof & Abrasion-Resistant TPU



Dry/Wet Zoning System



MOLLE expansion system



High-Visibility Reflective



CK6-EPO3

Explorer - Motorcycle Airtight Crash Bar Bag

The airtight zipper engages tightly to lock in air; the TPU fabric undergoes high-temperature seamless lamination, providing double protection against water and leakage; pressing to inflate forms a stable airbag, creating a safe space for equipment and the vehicle body.



2L/4L



Adventurer Luggage Series

MAKE RIDING EASIER



CK6-ART

Adventurer - Multifunctional Motorcycle Helmet Bag

Adventurer - Multifunctional Motorcycle Helmet Bag, featuring a "three-in-one" design, effectively solves storage issues during rides. It can be fixed to the rear of a motorcycle, with its extra-large capacity easily accommodating a full-size motorcycle helmet. When you get off the bike, you can conveniently place the helmet inside without having to carry it around while looking for a spot. It also comes with a crossbody strap; when you prefer not to fix it to the motorcycle, you can carry it over your shoulder, allowing flexible adaptation to different scenarios.

Equipped with a riding warning light, it enhances safety during night rides, and an anti-theft combination lock provides added peace of mind. The EVA hard shell base is impact-resistant, and it supports expansion as well as the MOLLE system, making it ideal for daily commuting and short trips.



CK6-AST

Adventurer - Motorcycle Magnetic Tank Bag

6L~6.5L

The Cokima Adventurer Series Motorcycle Magnetic Quick-Release Tank Bag, with its excellent compatibility, can match various mainstream motorcycle models by optionally equipping a tank ring. Whether for daily commuting or long-distance riding, it serves as a practical companion for riders.

In terms of fixing methods, its bottom innovatively adopts a 3-point magnetic structure. No complex tools are needed—simply align the position and place it gently to achieve stable fixation, making the installation and disassembly process simple and efficient. The top of the bag is equipped with a MOLLE panel and features a Velcro detachable design, allowing riders to freely add small tool bags, buckles, and other accessories as needed, flexibly expanding usage scenarios and meeting personalized storage needs.

The bag is specially designed with a TPU transparent storage compartment to properly store mobile phones. Adopting a Velcro detachable design, the mobile phone storage compartment boasts a touchscreen-compatible TPU material. It also comes with functions such as a combination lock, capacity expansion, a rain cover, and a reserved charging port.



BOTTOM STRUCTURE





Magnetic Multi-functional Combination System

Taking the waist belt as the main body, magnetic buckles are mounted on the belt's MOLLE system to enable quick combination of waist packs, storage bags, and water bottles, meeting daily carrying and storage needs.

CK6-AWT Adventurer - Multi-Functional Riding Belt

This multi-functional waist gear integrates strong waist support, magnetic quick-release buckles, and a MOLLE expansion system in one: Its ergonomic design fits the waist closely, distributing pressure to relieve fatigue. The magnetic buckle enables one-handed quick release while staying securely in place without falling off. The MOLLE webbing is compatible with various accessories; when paired with magnetic gear, it allows flexible expansion to meet the needs of multiple scenarios.



Size M: 67-116cm
Size L: 72-113cm

CK6-ADT Adventurer - Multi-Functional Storage Bag

The multi-functional storage bag can be fixed to the MOLLE system via two magnetic male buckles, enabling quick attachment and detachment with the main body of the storage bag, thus meeting the convenience needs of riding scenarios.



CK6-AWB Adventurer - Multi-Functional Riding Waist Pack

This multi-functional cycling waist pack is designed to be flexible and practical: It can be fixed to the MOLLE system via two magnetic male buckles, enabling quick attachment and detachment with the main body of the waist pack to meet the convenience needs of riding scenarios. It can also be paired with a crossbody strap to transform into a crossbody bag, catering to the carrying style for daily outings. The interior features a partitioned storage design, which allows for organized storage of mobile phones, keys, and other personal items, balancing functionality with storage efficiency.



CK8-MAG Magnetic fixing bracket for water cups

The silicone strap can secure small items such as water bottles, mineral water bottles, and tool bags to the female buckle. The magnetic buckle enables quick placement and retrieval of water bottles, tool bags, and other small components, ensuring fast operation and convenient use. Additionally, by optionally equipping a round tube male buckle or MOLLE male buckle, it can be fixed to crossbars or MOLLE webbing.



CK8-MAG01
Suitable for water cups with a diameter of 30 - 75mm

CK8-MAG02
Suitable for round tubes with a diameter of 20 - 25mm

CK8-MAG03(optional)
Suitable for widths of 28mm and above



OUTDOOR CAMPING SERIES

AN OUTDOOR PORTABLE RECLINER THAT CAN BE USED AS A CLOTHES DRYER

Lightweight and Portable, Thickened Aluminum Material, Nylon Chair Surface



CK7 Outdoor Portable Recliner

Expanded Dimensions: 103x58x78cm
Folded Dimensions: 41x17cm
Weight: 1.3~1.49kg
Material: Aluminum Alloy/Carbon Fiber



CK7-SC02 Portable Swivel Moon Chair

Expanded Dimensions: 51x50x70.5cm
Folded Dimensions: 35x15cm
Weight: 1.05kg
Material: 7075 Aluminum Tube



CK7-SC01 Portable Swivel Folding Stool

Expanded Dimensions: 42x46.5x47cm
Folded Dimensions: 35x13cm
Weight: 0.95kg
Material: 7075 Aluminum Tube



EXCLUSIVE

KEY CASE EXCLUSIVE FOR BMW 1300



GIFT BOX

Crafted from aerospace-grade aluminum alloy, it undergoes precision polishing, with craftsmanship in every step. The edges are carefully chamfered for a smooth, scratch-free touch, ensuring comfort with each use.

Its design, adhering to mechanical aesthetics, boasts unique details, condensing automotive precision and elegance into a "miniature artwork" in your pocket, exuding understated luxury.

As a loyal guardian, its innovative protective case fully wraps the original key, preventing scratches and bumps to keep it like new.

Comes in a double-layer gift box, with a wool hat and scarf included—soft, warm, and perfect for cycling. Ideal for personal use or gifting, blending practicality and style.



RIDING NEIGHBORHOOD SERIES



THERMAL INSULATION (HOT & COLD)



CK8 Thermal Bottle

Capacity: 600ml (20oz)
Material: Inner Liner SUS 316 Stainless Steel
Features:
Dual-Temperature Retention - Keeps hot/cold for 12/24 hours
Threadless Magnetic Lid - True one-handed instant opening
Leakproof - Designed for bumpy rides



Riding Casual Hat

No more bad hair days after riding.



JUMP STARTER & TIRE INFLATOR 2 IN 1



- Power Failure Emergency Start
- Dual Touch Screen Display
- 4x2000mAh High Capacity
- Portable Power Bank
- Electric Inflation | Auto Stop When Fully Charged
- Diesel & Gasoline Dual Start
- High-Pressure Start
- Emergency LED Light



PORTABLE TIRE INFLATOR

Compact & Lightweight



- 500mAh lithium battery
- Barometric calibration
- Emergency lighting
- Electric charging
- 120Psi dual display value
- High pressure starting